

# BALING PRESSES WITH FOLDING HOPPERS

- Effective processing of scrap from pressing shops
- Dosing equipment with scrap weighing device
- Environmentally friendly
- High operational output

## ZDAS



ZDAS baling presses offer a favourable price/quality ratio

### Basic technical parameters

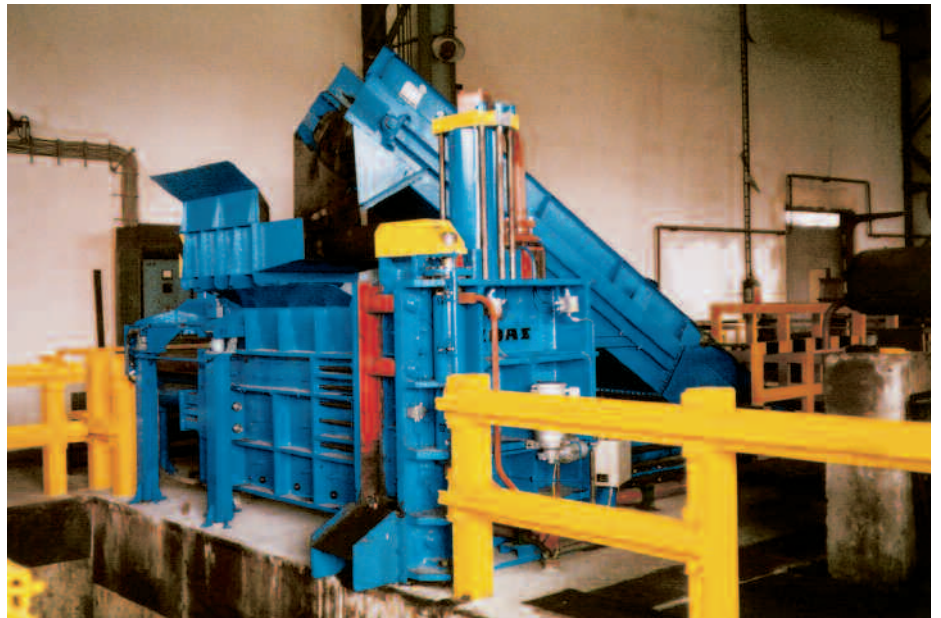
		Standard Design		
		CPS 160	CPS 320	CPS 630
Pressing force: the last operation (repressing)	kN	1,600	3,300	6,300
Bale	- Height	300	400	600
	- Width	300	400	600
Charging chamber	- Length	1,480	1,650	5,000
	- Width	900	1,400	1,960
	- Depth	750	1,250	1,600
Max. thickness of steel scrap	mm	4	6	8
Max. number of bales	1/hr.	92	90	61
Max. output (steel scrap)	t/hr.	12.5	28	58
Power input installed of main pumps	kW	75	2 x 75	3 x 75

B A L I N G  
P R E S S E S

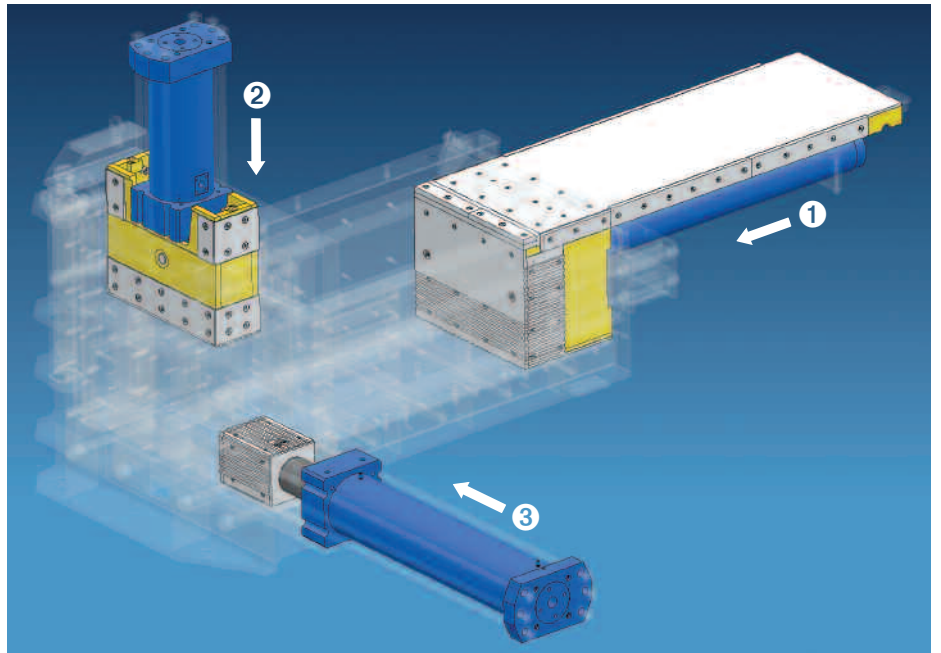
# CPS 160

- Effective processing of cut scrap from automotive factory pressing shops
- CPS 160 – Bale section: 300 x 300 mm
- CPS 320 – Bale section: 400 x 400 mm

# ZDAS



CPS 160 baling press at the pressing plant of a car body producer



Schematic of hydraulic parts from a CPS press



ZDAS CPS 320 baling press in a pressing shop of a large automotive manufacturer



ZDAS CPS 180 baling press in the hall

# BALING PRESSES

# CPS 320



*CPS 320 press with a hopper*



*Output of bales*



*Press drive in a separate cabin*

CPS 320 baling presses can be implemented into scrap processing lines of pressing shops in automotive factories. The unit includes conveyers that bring cuttings from individual pressing workplaces and enable transport of compressed bales to the warehouse or directly to the dispatching area. A working cycle of 30 seconds/bale is achieved with an average bale weight of 200 kg, provided that loading is continuous.

# ZDAS

# HYDRAULIC BALING PRESS

The CPS 630 hydraulic baling press is designed for processing amortisation scrap in scrap-processing-oriented companies. This baling press is especially suitable for processing the following: light large-volume depreciation scrap, crop ends of sheet with a thickness up to 8 mm, car bodies, parts of agricultural and transport machines, etc. To reach a high output, it is suitable to install a batching tilting hopper to ensure a continuous feed of scrap and discharge of final bales.

## HYDRAULIC BALING PRESSES CPS 630

### Features of the press:

- The three-stage pressing concept guarantees high compactness of bales
- Replaceable abrasion-resistant lining of working surfaces of the press
- Knives of the charging hopper enable cut off of protruding scrap
- The drive is a compact assembly group
- Simple operation by remote control
- The drive is provided with an environmentally-friendly oil tray

*Bale output*

